

## Doe laser, green, 532nm, 38.8°, 5mW

DOE258-532-5-3(16x90)-NT

Order Number: 70111163

Main Parameters (*)	min	typ	max	Unit
Wavelength		532		nm
Optical Output Power		5		mW
Operating Voltage	2.7	3	3.3	V DC
Operating Current	125	250	375	mA
Operating Temperature	15		30	°C
Storage Temperature	-40		80	°C

### Technical Parameters

Lifetime	>5000h
RoHS	yes

### Optical Parameters

Beam Shape	DOE
Laser Class	2
Divergence	D - 0.5mrad
Fan Angle	38.8°
Optics	acryl lense
Laser technology	Solid State (YVO4+KTP)
Stability	+/- 20% @ 15-30°C
Protection Lens	yes
Focus	fixed
Warm up time	<15min

### Electrical Parameters

Potential of Housing	VDD(+)
Connector	2.5 mm DC plug (GND pole inner)
Power Supply	LFNT-3-C

### Mechanical Parameters

Size	Ø16x90mm
Material	aluminium
Cable length	1360mm
Output Aperture	6mm
Housing Color	cyan
Weight	43g

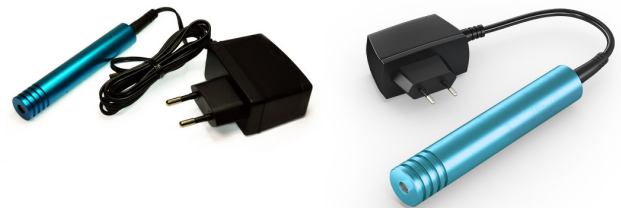
(\*) Over the complete operating temperature range

### Features

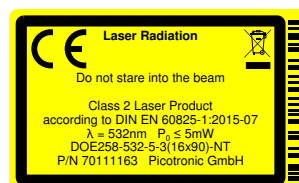


- DOE Laser
- Image processing
- Laser Class 2
- Compact size

### Picture



### Safety Label



### Revision

REV 1 | 03-JAN-2018