

Doe laser, red, 635nm, 5mW

DOE256-635-5-3(16x90)-NT

Order Number: 70111507

Main Parameters (*)	min	typ	max	Unit
Wavelength		635		nm
Optical Output Power		5		mW
Operating Voltage	2.7	3	3.3	V DC
Operating Current	30	60	90	mA
Operating Temperature	-20		50	°C
Storage Temperature	-40		80	°C

Technical Parameters

Lifetime	>5000h
RoHS	yes

Optical Parameters

Beam Shape	DOE
Laser Class	1
Divergence	D - 0.5mrad
Operating Distance	1m
Optics	glass lens AR coated
Laser technology	diode
Protection Lens	yes
Focus	fixed

Electrical Parameters

Potential of Housing	VDD(+)
Connector	2.5 mm DC plug (GND pole inner)
Power Supply	LFNT-3-C

Mechanical Parameters

Size	Ø16x90mm
Material	aluminium
Cable length	1360mm
Output Aperture	6mm
Housing Color	cyan
Weight	43g

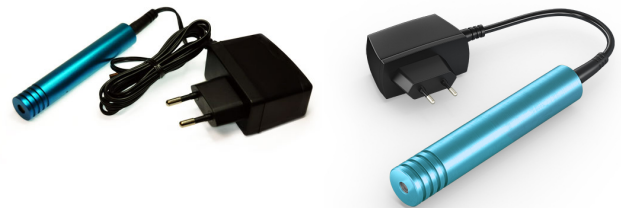
(*) Over the complete operating temperature range

Features

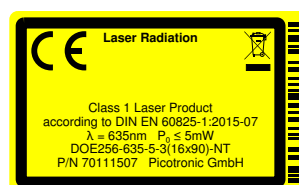


- DOE Laser
- Image processing
- With 230V power supply
- Glas lenses anti reflex coated
- Fixed focus

Picture



Safety Label



Revision

REV 1 | 03-JAN-2018