

Doe laser, red, 635nm, 5mW

DOE221-635-5-3(16x90)-NT

Order Number: 70111323

| Main Parameters (*) | min | typ | max | Unit |
|-----------------------|-----|-----|-----|------|
| Wavelength | | 635 | | nm |
| Optical Output Power | | 5 | | mW |
| Operating Voltage | 2.7 | 3 | 3.3 | V DC |
| Operating Current | 30 | 60 | 90 | mA |
| Operating Temperature | -20 | | 50 | °C |
| Storage Temperature | -40 | | 80 | °C |

Technical Parameters

| | |
|----------|--------|
| Lifetime | >5000h |
| RoHS | yes |

Optical Parameters

| | |
|------------------|----------------------|
| Beam Shape | DOE |
| Laser Class | 2M |
| Optics | glass lens AR coated |
| Laser technology | diode |
| Protection Lens | yes |
| Focus | fixed |

Electrical Parameters

| | |
|----------------------|---------------------------------|
| Potential of Housing | VDD(+) |
| Connector | 2.5 mm DC plug (GND pole inner) |
| Power Supply | LFNT-3-C |

Mechanical Parameters

| | |
|-----------------|-----------|
| Size | Ø16x90mm |
| Material | aluminium |
| Cable length | 1360mm |
| Output Aperture | 6mm |
| Housing Color | cyan |
| Weight | 43g |

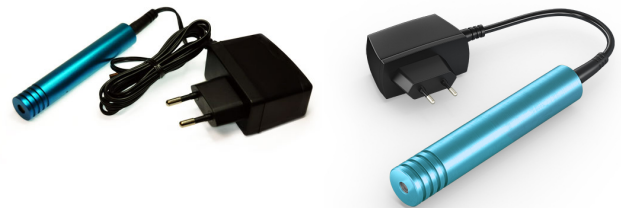
(*) Over the complete operating temperature range

Features

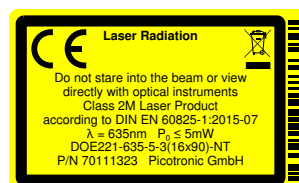


- DOE Laser
- Image processing
- With 230V power supply
- Glas lenses anti reflex coated
- Fixed focus

Picture



Safety Label



Revision

REV 1