

Dot laser, red, 635 nm, 3 mW

DB635-3-3(16x45)
Order Number: 70101171

Main Parameters (*)	min	typ	max	Unit
Wavelength		635		nm
Optical Output Power		3		mW
Operating Voltage	2.7	3	3.3	V DC
Operating Current	20	40	60	mA
Operating Temperature	-20		50	°C
Storage Temperature	-40		80	°C

Main Data

Warranty 1 years

Technical Parameters

Lifetime > 5,000 h
RoHS yes

Optical Parameters

Beam Shape Dot
Laser Class 3R
Divergence B - 0.3 mrad
Size of Laserdot adjustable
Operating Distance 50 m
Optics glass lens AR coated
Laser technology diode
Focus adjustable

Electrical Parameters

Potential of Housing isolated
Power Supply Power Supply with stripped/tinned wires, Output: 3.3V DC, Input: 100-240V AC, 50-60Hz, Output Power: 3.3W max.

Mechanical Parameters

Size Ø16x45 mm
Material aluminium
Cable length 100 mm
Wire type 26AWG, 0,14mm²
Output Aperture 8 mm
Weight 21 g

(*) Over the complete operating temperature range

Features



- Laser Class 3R
- Operating Voltage 3V DC
- Adjustable focus
- Glas lenses anti reflex coated
- Compact size

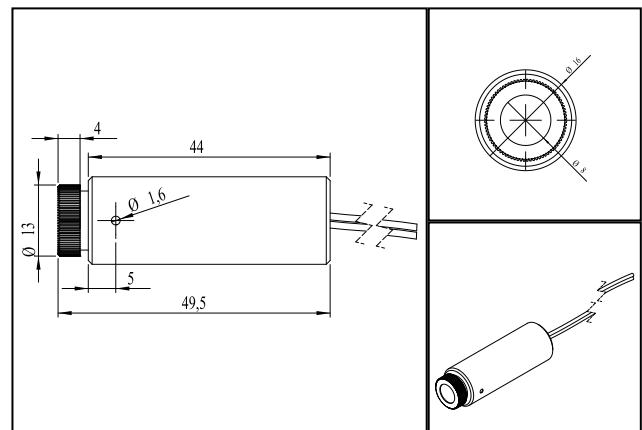
Picture



Cable color

Ground  black GND
Positive  red 2.7 - 3.3, typ 3 V DC

Drawing



Safety Label



Valid Revision

1 | 10-JAN-2012